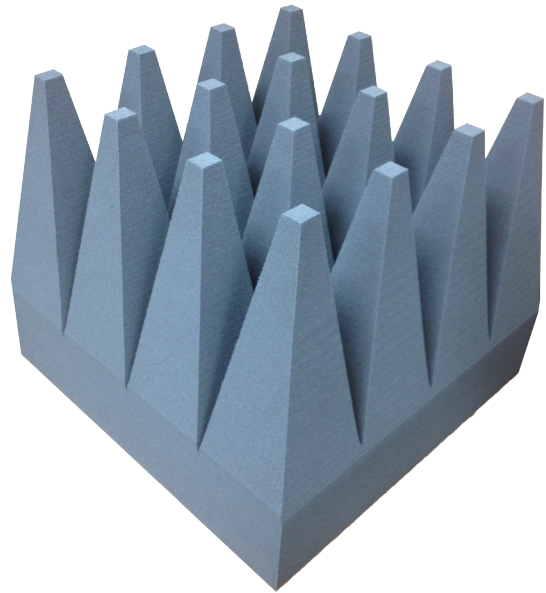


Features:

- 80 MHz - 40 GHz Frequency Range
- Ideal for New or Retrofit Chamber Installations
- Reduced Profile with Blunt Absorber Tips
- Non-Hygroscopic Substrate
- Available in Assorted Colors
- Designed for MIL-STD-461D/E/F, and RTCA-DO-160 Testing
- 0.5 Watt/in² or 775 Watt/m² CW Power Handling
- 90° C Maximum Service Temperature
- Fire Retardant: Meets NRL 8093 Tests 1,2, & 3, MIT MS-8-21, UL 94, and DIN 4102-B2



ETS-Lindgren's EMC-20PCL Anechoic Absorber

ETS-LINDGREN'S EMC-20PCL is an ultra-broadband absorber which has been optimized for EMC applications. Its design is an evolution of traditional pyramidal polyurethane absorber and combines carefully balanced dielectric properties with a special blunt-tip geometry that is suited for low frequency operation.

DESCRIPTION

ETS-Lindgren manufactures EMC-20PCL from high quality, low density polyurethane foam. A double immersion process evenly impregnates the foam with a proprietary conductive carbon formula and fire retardant salts. This process optimizes absorber performance and provides an extra degree of protection against water and fire damage. After curing, the foam

is precision-cut into a pyramidal configuration and a coating is added for a pleasing appearance. Fifteen individual quality assurance checks take place during production.

This absorber features blunt-tips, which allow for greater working space within the chamber, while reducing the chances of absorber tip damage.

FEATURES

Ultra-Broadband Performance

During the manufacturing process, our unique two-step impregnations are specially formulated to provide improved reflectivity performance below 200 MHz. This tuning is verified on each absorber piece in a large coaxial reflectometer which measures reflectivity vs. frequency

from 20 MHz to 300 MHz to ensure consistency of performance.

New or Retrofit Chamber Installation

EMC-20PCL Anechoic Absorber can easily be installed into either new construction, or as a retrofit to existing chambers.

Reduced Profile, Blunt-Tips

The EMC-20PCL has a reduced profile, providing the user for a greater working space within the chamber. Blunt-tips on this absorber reduce the chance of absorber tip damage.

Non-Hygroscopic Substrate

The EMC-20PCL absorber is produced from a new, fire-retardant chemical formula that is non-hygroscopic. As a result, the absorber is not affected by moisture and will main-

tain its mechanical and RF performance over the life of the product.

Assorted Colors

The EMC-20PCL is now available in the original blue, black or white.

Performance Standards

This absorber meets or exceeds MIL-STD-461 and RTCA-D0-160 performance requirements and is ideal for new installations or chamber retrofits. It provides an ultra broadband performance range of 80 MHz - 40 GHz.

Power Handling

EMC-20PCL has excellent power handling capability. This absorber has been proven to safely withstand up to 775 w/m² (0.5 Watt/in²) CW power density (600 V/m) in RF and microwave frequency ranges.

For periods of time less than 10 minutes, the absorber can safely handle up to 2650 W/m² (1.7 W/sq. in) power density (1000 V/m).

Maximum Service Temperature

Max. service temperature is 90° C (190° F, continuous).

Standards

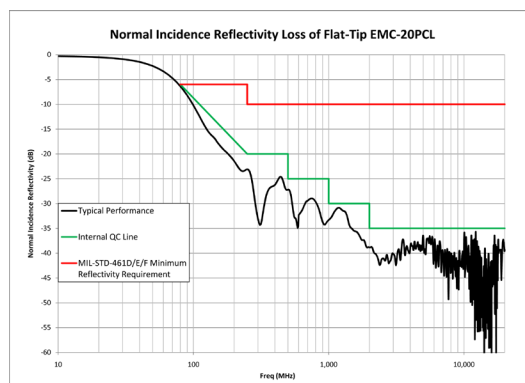
This absorber meets the fire retardant standards of NRL 8093 Tests 1, 2, 3, MIT MS-8-21, UL 94, and DIN 4102-B2: Tests for Flammability. EMC-20PCL has an ASTM E84-84 flame-spread index of 35 and a smoke developed index of 450.

Electrical Specifications

MODEL	FREQUENCY	POWER HANDLING (CW)	POWER HANDLING (MAX)
EMC-20PCL	80 MHz - 40 GHz	600.0 V/m 775.0 W/m ² 0.5 W/sq. in	1000 V/m 2650 W/m ² 1.7 W/sq. in

Physical Specifications

MODEL	DIMENSIONS (L X W X H)	WEIGHT	RATINGS: FIRE RETARDANT
EMC-20PCL	610 mm x 610 mm x 508 mm 24" x 24" x 20"	4.6 kg 10.1 lb	NRL 8093 Tests 1, 2 & 3 MIT MS-8-21, UL 94 and DIN 4102-B2



Phone + 1.512.531.6400 • info@ets-lindgren.com • www.ets-lindgren.com
Offices in the US, Brazil, Finland, Germany, UK, France, India, Japan, Singapore, China, Taiwan