

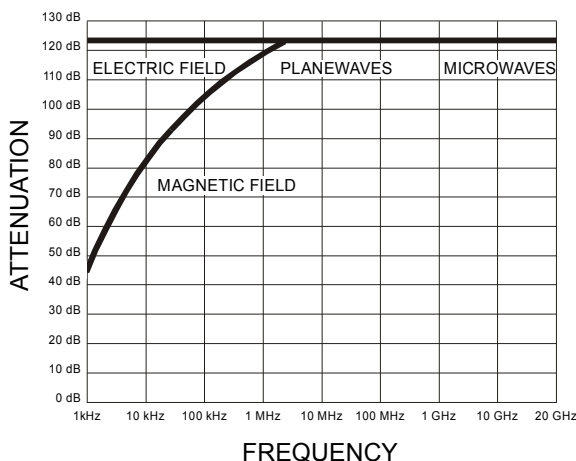
## Shielded Doors RFSD-F/A-100 Sliding Door

EUROSHIELD RFSD-F/A-100 sliding doors meet the performance of the standard 100-type doors and are especially designed for the additional load of ferrites and absorbers (max. 50 kg / m<sup>2</sup>).

The openable rigidized inner plate allows the mounting of the ferrites / absorbers directly onto it and still gives the possibility for maintenance of the door in the case necessary. The ferrite panels / absorbers are not included in the standard delivery.

In the small, manually operated sliding doors the handle inside ferrite lined chambers has to be of non-reflective material: RFSD-F/A-100 door handle inside is made of bakelite. For quicker and lighter opening the handle can be installed so that it is at horizontal position when the door is closed.

For all the F/A-type of doors with the width exceeding 1.2 m Euroshield recommends to have at least the pneumatic locking / unlocking system PNL-1 installed to the door for lighter operation. In this case the door must be opened and slided manually; the operation system just releases the RF-tight locking. For fully automatic operation the system PNL-4S is needed.



Shielding effectiveness measured acc. to MIL-STD-285

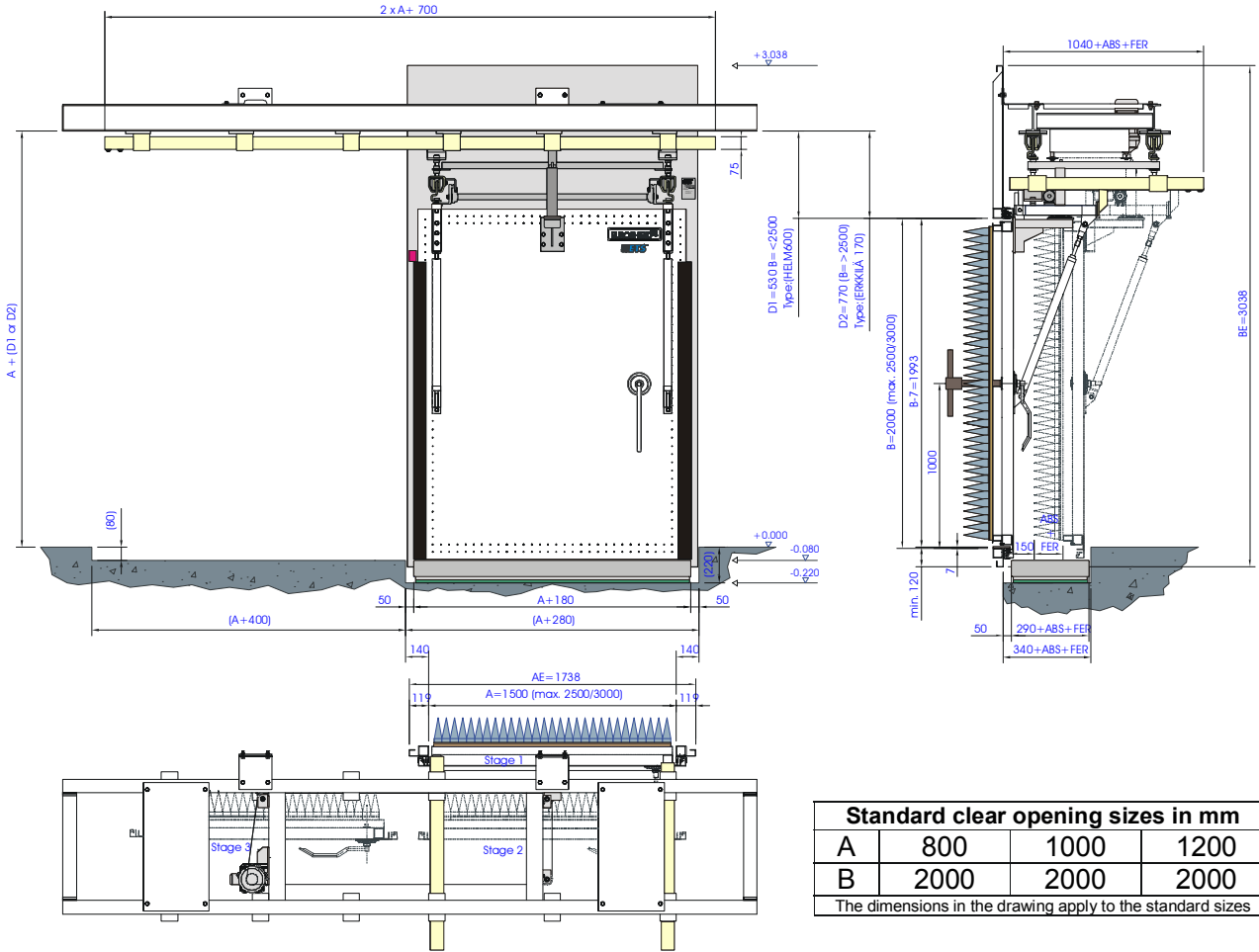


The door leaf of Euroshield RFSD-F/A-100 sliding doors is painted on outside (standard color white RAL 9010). Max. size for this door type is 3 m x 3 m (h).

The sliding doors can be equipped with a lift system in front for smooth entrance into the chamber. It operates usually together with the door and the type is determined according to the load requirements and to the existing space.

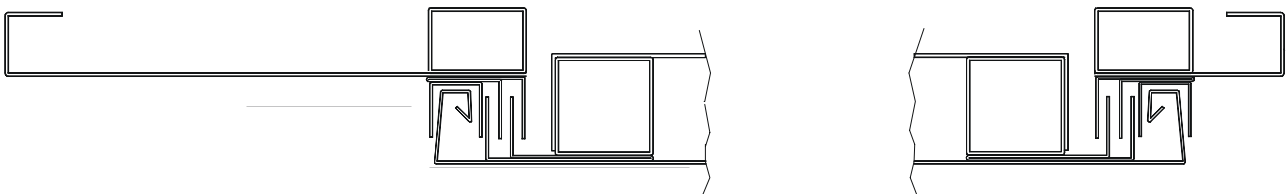
### OPTIONS:

- Non-standard sizes on request
- Pneumatic operating systems PNL-1 for semiautomatic and PNL-4S for fully automatic operation
- Locking systems: code lock, card lock etc. (requires PNL-operating system)
- Microswitch indicating the RF-tight open / closed position of the door
- Several types of lifts and/or slope ramps



Standard clear opening sizes in mm			
A	800	1000	1200
B	2000	2000	2000

The dimensions in the drawing apply to the standard sizes



ETS-Lindgren reserves the right to any change in this document without any further notice - 01/02

**ETS-Lindgren Corporate Headquarters**  
1301 Arrow Point Drive  
Cedar Park, TX 78613, USA  
Tel. +1 512 531 6400  
Fax. +1 512 531 6500  
info@ets-lindgren.com

**European Headquarters**  
Mekaanikontie 1  
27510 Eura, Finland  
Tel. +358 2 8383 300  
Fax. +358 2 8651 233  
info@euroshield.com

**United Kingdom**  
Boulton Road, Pin Green Ind. Area,  
Stevenage, Herts. SG1 4TH, UK  
Tel. +44 1438 730 700  
Fax. +44 1438 730 751  
info@lindgren-rayproof.com

**Asian Headquarters**  
87 Beach Road, #06-02 Chye Sing  
Building, Singapore 189695  
Tel. +65 536 7078  
Fax. +65 536 7093  
lrfesin@singnet.com.sg