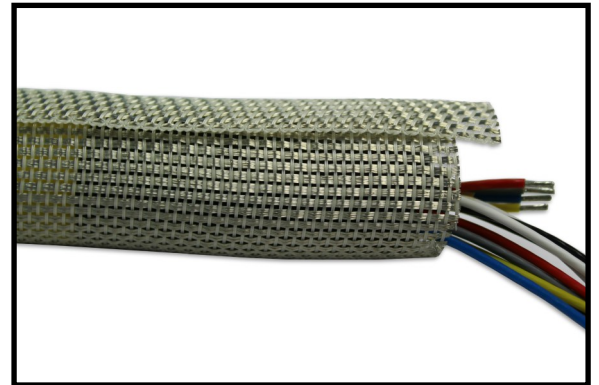


EMI Shielding SOLEMI[®] jacket

EMI Self-Closing Shielding jackets

Specially designed to get the best flexible shielding solution, and specially made with a great galvanic metalizing process patent by SOLIANI EMC.

Mainly used in electric control cabinet, especially for railway control cabinet, it is used for shielding the electromagnetic interference. The split design is convenience for maintenance and overhaul.



With the Aramid Fibre properties this Over sleeve has Ultra-Strength and is Heat-resistant / Flame-resistant with a working temperature of -40°C to +150°C.

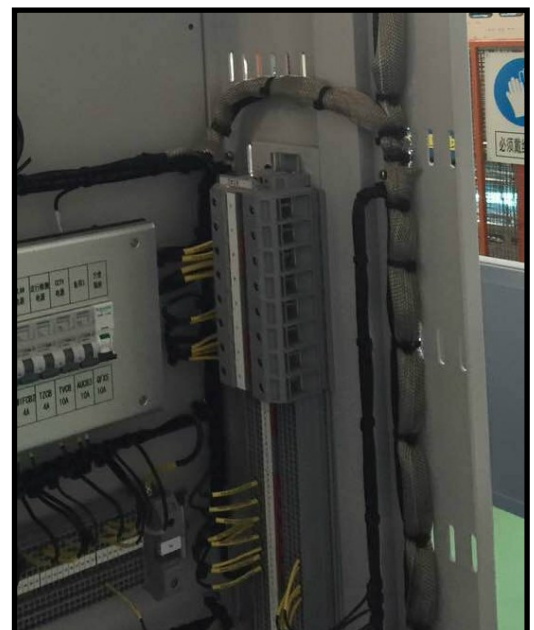
This wraparound's self wrapping, low profile and flexible design fits tightly to wire harnesses making it an ideal bundling solution in restricted areas without affecting the flexibility of the components it protects. Its inherent flexibility allows it to conform to irregular shapes and contours.

It allows for fast and easy building of wire and cable assemblies, it allows for easy breakouts and can be installed on completed assemblies due to its open design.

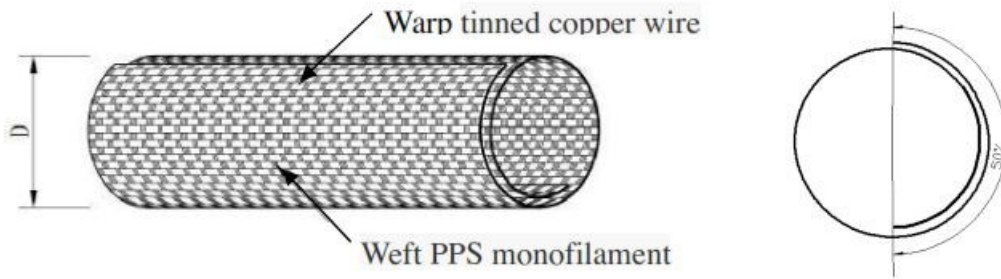
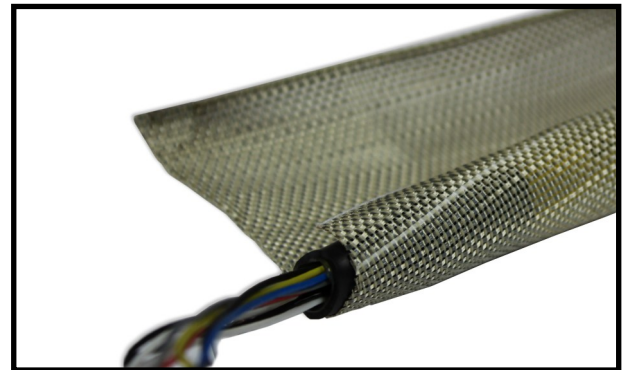
It provides flexibility, spring back and high resistance to abrasion. It is designed to protect wiring, cables, pipes, hoses and foam insulation from mechanical degradation arising from exposure to touch conditions in vibrating installations.

Specification:

- Material: Tinned copper wire, aramid, polyester PPS
- Working temperature: -40°C to +150°C
- Melting point: 255° +/- 10°C
- Flammability: BS6853 Ia, NF F16 101 F1
- Shielding effectiveness: GB/T 30142-2013 GB/T 12190-2006
- Colour: Tinned



EMI Self-Closing Shielding jacket



I.D. D (MM)	Overlap %	Max. bundle range (mm)	Packing (M/Roll)
5.0	50%	6	100
8.0		9	100
10.0		11	100
13.0		14	50
16.0		17	50
19.0		20	25
25.0		27	25
29.0		31	25
32.0		34	25
38.0		40	25
50.0	52	25	