

## Turntable TT 2.0 SI

### Technical data:

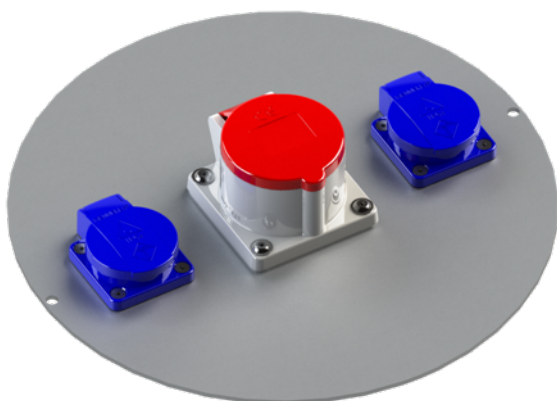
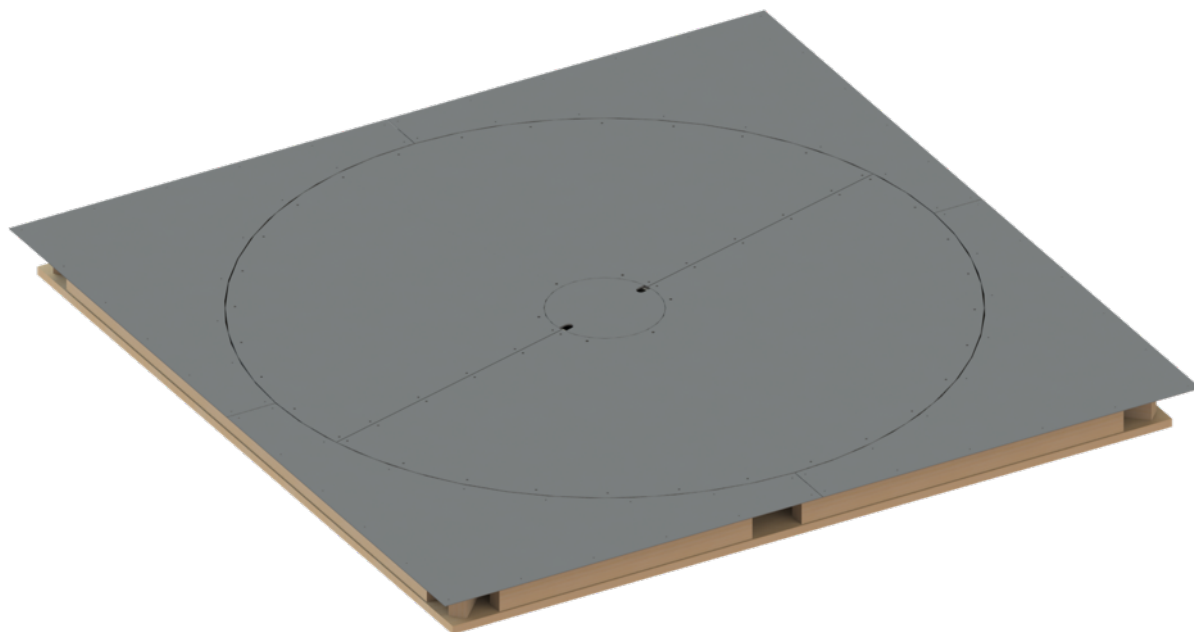
|  |   |
|--|---|
| Diameter   | 2.0 m   |
| Load capability  | 1000 kg   |
| Point Load   | 250kg (at area of 10 cm x 10 cm)                |
| Height   | 130 mm  |
| Material cover plate   | Stainless steel                                 |
| Rotating speed adjustable  | 0.1 rpm – 2.5 rpm                               |
| Positioning accuracy   | +/- 0.5°  |
| Rotating angle   | -200° to 400°                                   |
| Motor  | Synchronous servo motor                         |
| Turntable drive  | Toothed belt drive, worm gear                   |
| Concentricity tolerance  | +/- 3 mm  |
| Elevation tolerance  | < 5 mm  |
| Ground plane connecting  | every 50 mm                                     |
| Square border interface<br>(easy fitting into ground plane of chamber) | 2.3 m x 2.3 m                                   |
| Voltage  | 110 VAC – 230 VAC; 50 Hz / 60 Hz; single phase  |
| Current consumption  | max. 16 A                                       |
| Required RCD   | 300 mA  |
| Control cable  | Fiber optic lines                               |
| Remote control via   | LAN (TCP/IP); (IEEE only with NCD)              |
| Interference suppression   | 20 dB under limits DIN EN 55011:2018-05 class B |
| Temperature working range  | 10°C – 35°C                                     |
| Total weight   | approx. 340 kg                                  |
| Accessories  | Service manual<br>3 m power supply cable        |

### Brief description

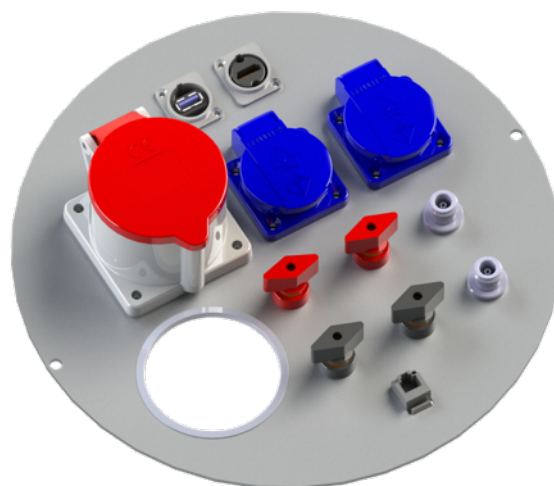
The turntable **TT 2.0 SI** is especially designed for flush mounted installation in semi anechoic electromagnetic absorption chambers. The carrier plate is made of stainless steel.

A 285 mm diameter opening in the center of the turntable provides the capability to insert power supply for testing.

The **LAN (TCP/IP) - interface** provides an additional control option for all functions, when operated with the **FCU<sup>3.0</sup>** or **NCD Controller**



Standard center plate



Example for a customized center plate

Information presented enclosed is subject to change as product enhancements are made regularly. Pictures included are for illustration purposes only and do not represent all possible configurations.